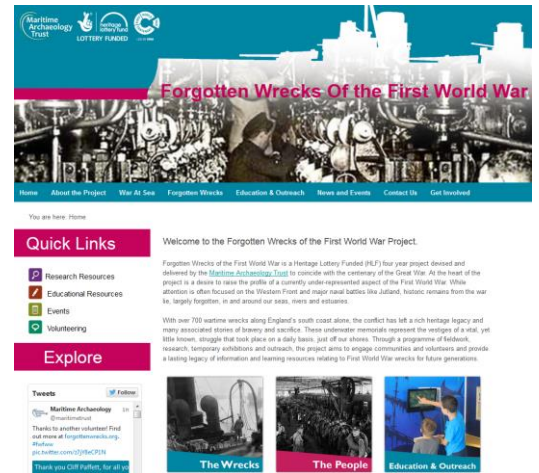


About the Forgotten Wrecks project

The Forgotten Wrecks of the First World War project aims to raise the profile and understanding of the south coast's First World War shipwrecks. It is doing this through historic research and by bringing together existing information and materials relating to the sites. Through an online clickable map, touring exhibitions and an extensive education and outreach programme, the project will improve 'virtual' access to the Forgotten Wrecks, thereby promoting the existence of this incredible collection of wrecks amongst the non-diving community and commemorating those who were associated with the vessels that were lost off the south coast during the First World War. In addition, the project database and archive will be deposited with the appropriate local, regional and national bodies, ensuring that the information is embedded in national heritage record sets.



Divers and Dive Clubs

Divers and dive clubs hold a wealth of information about wreck sites. If you are happy to share this information with the general public, we would like to incorporate your knowledge and information into the Forgotten Wrecks project. All contributions will, of course, be fully credited.

Ways you can help develop understanding of the Forgotten Wrecks

Sites you have dived in the past

First World War Wrecks are often popular diving sites. Many wrecks have been visited for decades with divers taking photographs, videos and also recovering objects. You may have dived a site once, or have dived the same site over many years. All of the information that you may have gathered is of interest to the Forgotten Wrecks project. We would be very interested in copies of the following information and/or access to objects from First World War sites:

Information/site observations: your recollections of the size of sites, whether they are substantially complete or dispersed, whether they are deteriorating over time etc. This type of information has rarely been documented, so all adds to the understanding of the physical remains on the seabed.

Photographs: these might be in 'hard copy' format as either photographs or slides (colour or black and white), or could be digital files from more recent diving. We are happy to scan hard copy photographs if you are willing to lend them to us for a short time, or we can receive digital files of images via email.

Video: this could be in a range of different formats as underwater filming technology has developed over the years. We have the ability to view and/or transfer to digital format a range of types of tapes – VHS, High-8, Mini-DV.

Objects: although the Forgotten Wrecks project is a non-recovery project and will not be involved with raising artefacts, we recognise that many divers have recovered objects from sites in the past. If you already hold objects from First World War sites we are interested in information these will contain and may be able to record them (if you are willing to make them available) to help 'recreate' the archive of sites via a digital record.

If you hold very large collections of photographs, video or objects we may be able to visit you, should you be agreeable, to review how best we might incorporate this within the project.

Sites you visit for interest

We appreciate that many divers visit First World War sites for general interest and may not want to be involved in undertaking archaeological survey of sites. Data that you might collect during a recreational dive is still likely to be of interest to the project as there are few sources of information on many First World War sites. When planning to visit a First World War site, we would be pleased if you would bear in mind that we would like to hear about the size and condition of sites and any features you note.

If you take photographs or video, we would be very pleased to view copies of these to add to the project database. Even if you are not undertaking specific archaeological recording, you may find it useful to review the 'Wreck Features of Interest' sheet prior to your dive.

Sites you visit to gather data for the Forgotten Wrecks project

If you are willing to collect data specifically for the Forgotten Wrecks project we will help support your work. The types of recording you may be happy to undertake could include:

Basic Wreck Record Proforma: this form is designed to be used as part of an initial recording dive. It can be taken with you under water, or completed when you return from a dive. We suggest that you fill in details as soon as possible after a dive as it is amazing how quickly memories fade!

Photographic survey: undertake a dive with the express purpose of recording specific features on a wreck site. This is likely to involve using a 'scale' to provide an idea of the size of parts of a wreck, this could be another diver for large features or an archaeological scale for smaller features. Taking a series of photographs across an area of a site may allow a photo 'mosaic' to be built up.

Video survey: similar to photographic survey, video can be used to capture discrete areas of a wreck, or for longer swim-overs of larger areas of a site.

Tape measure survey: surveys often start with a sketch plan to gain the basic dimensions of a site and help plan more detailed surveys. This can be achieved through taking a plastic drawing board and tape measure with you on your dive and recording information straight onto drafting film. When the size of the survey task is known then it is possible to develop a more detailed strategy to measure individual features, or to survey areas of the wreck. This can utilise off-set measurements from a baseline or can involve installing datum points on features and creating a web of measurements between them.

Equipment: we can provide you will basic equipment for survey – plastic drawing boards, underwater scales and tape measures.

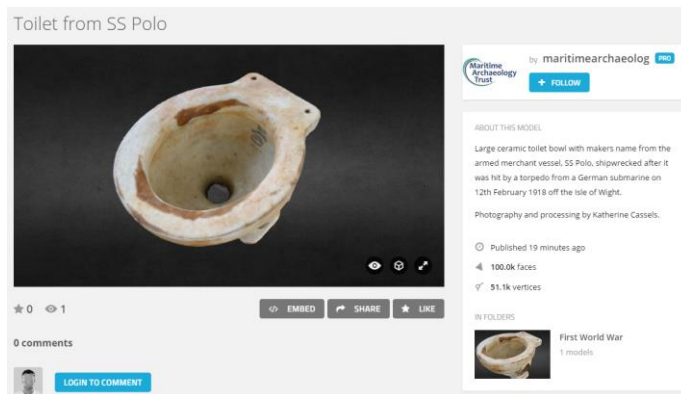
[MAT has to state that we only provide suggested guidance on these techniques. Participants undertake survey entirely at their own risk and should make themselves familiar with any new survey equipment prior to taking on a dive. Safe diving is paramount and no diver should put themselves at risk to undertake survey].

How your data will be used

The Forgotten Wrecks project aims to raise the profile and understanding of First World War shipwrecks through a range of different resources and an education and outreach programme. Data submitted by you may be used in one or more of the following ways:

Database: the project database brings together a wide range of research, information and resources in a single place. This database underpins many of the other aspects of analysis and presentations. In the longer term this database will be archived with the Archaeology Data Service to ensure it is available in perpetuity.

Website: we will make available data from the project to a global audience through the project website: <http://www.forgottenwrecks.org/>, this will include a clickable map, linked to the project database.



3D modelling: photographs and video could be brought together with data from other individuals and sources to help generate 3-D models. Models of individual wreck sites may be produced, or models of individual artefacts. For an example in development, please see:

A virtual 3D model of a ceramic toilet bowl from SS Polo, sunk by UB-57, south of Isle of Wight on 12th February 1918.

Interactive version at: <http://www.forgottenwrecks.org/index.php/forgottenwrecks/artefacts-from-wrecks>

Reports, publications and publicity: during the project a range of reports will be produced on individual wreck sites, these will be brought together towards the end of the project into a publication. Additional popular publications and a range of publicity will be produced over the next three years.

Education and outreach, including exhibitions: an important aspect of the project is taking information on First World War wrecks to a wide public audience, providing those who do not dive with an experience of these underwater sites. Data will be used in resources for schools, activities and exhibitions which will be held across the south coast of England.

*Forgotten Wrecks Temporary Exhibition
One will be located in each south coast county*



Your details: the MAT will store your details for the duration of the project, however, this information will not be part of any dataset which is made available beyond MAT staff and will not be kept beyond the lifetime of the project, unless you are happy to continue receiving updates from us – but we will ask you to confirm this.

Recognition of your data and copyright

You, as the owner of any images or video, retain all copyright, however, you will need to grant MAT permission to use data in relation to any aspect of the project and potential future use beyond the timescale of the HLF funded work (this will only be used in charitable, not for profit situations).

You can choose how you wish to be credited for any images or video. If you don't want to be credited we will respect this wish as well.

There is a form to fill in when submitting data for the project which includes a copyright statement which we ask you to sign (either as a printed copy or electronically).

Project contacts

If you are able to provide any information for the project or are interested in undertaking survey please get in touch – we are here to help and can guide you through any of the forms or ways to submit data.

If you are a dive group that is active in our south coast study area and would like a talk on the project and/or a practical session on the types of survey then we can arrange to travel to you.

Contact: jan.gillespie@maritimearchaeologytrust.org Phone: 02380 237300