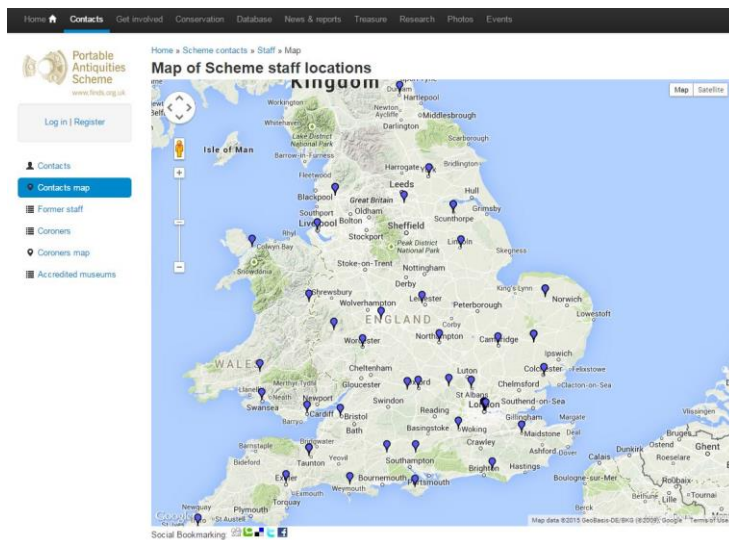
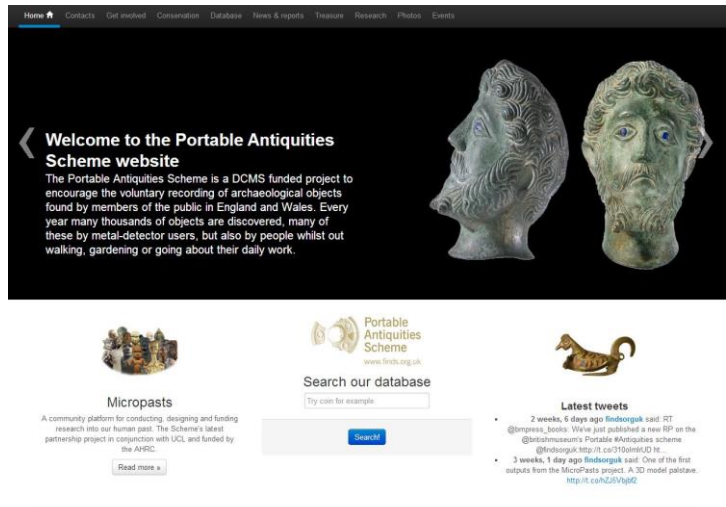


Portable Antiquities Scheme

www.finds.org.uk

The Portable Antiquities Scheme (or PAS) is funded by the Department for Culture, Media and Sport (DCMS) and serves as a means for ordinary members of the public to report archaeological objects they discover. This may apply to people who find artefacts in their flower bed or whilst out walking, all the way through to metal detector users.

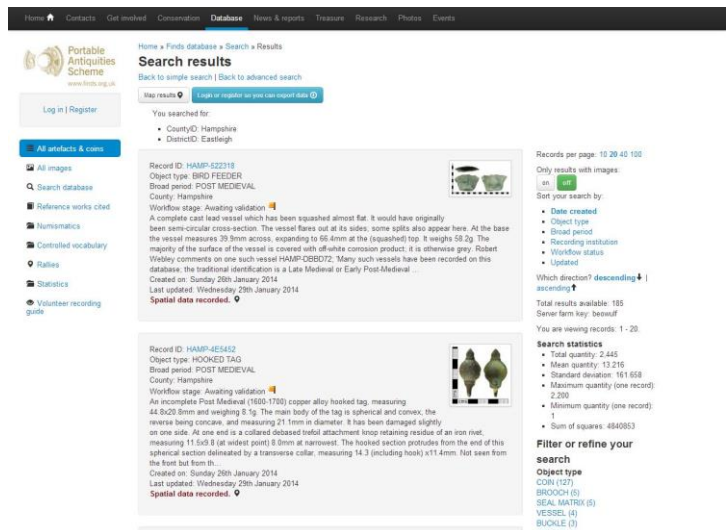


Such artefacts can be reported to Finds Liaison Officers who are usually employed by authorities around the country (a full list is available here: www.finds.org.uk/contacts).

They record information about the artefact and where it was located for the benefit of the archaeological record. Artefacts are always returned to the person who finds them (except in the rare event that they constitute treasure) and the information is used to update the database.

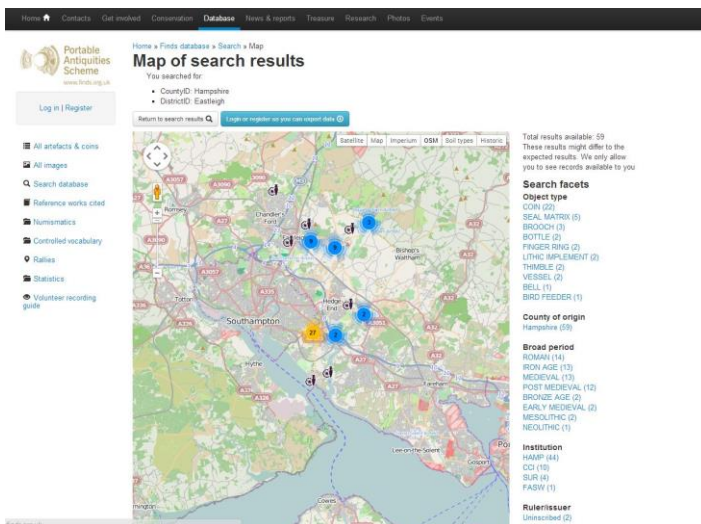
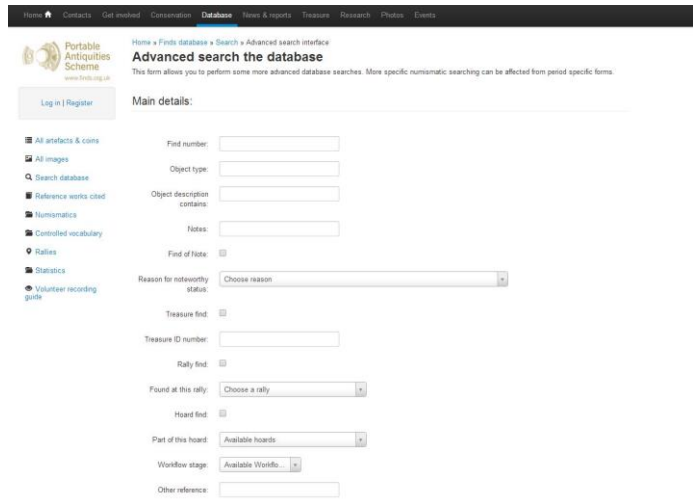
The best way to search the database is just to type your search term into the search box in the middle of the main page. This will bring up a search results page that may have a vast number of results or very few, depending on what you've searched for.

You can select the number or records per page and the order in which they are displayed on the right side of the page and then look through them.



You can also filter your search results using the options on the right hand side of the page. Options to reduce the objects include the **Object type**, **County of origin**, the **Broad period**, the **Material** and many other filters based on the search results.

Alternatively you can make an advanced search by clicking on **Back to advanced search** (confusing if you just made a simple search). From here you can make further refinements to your search, such as specifics on the artefact's origin or even the circumstances it was found in.



One very useful function in advanced search is the **Spatial details**. This allows you to select a specific area and view all of the results from that place. You can narrow your results down by county, district and even to a specific parish to see the results in that area. This is especially useful if you are researching an area's history or looking for local archaeology.

Similarly, when you make your search, you can choose to click on **Map results** (near the top, underneath **Search results**) and view a map that displays the find locations of the various artefacts.

Detailed results on each artefact are available when you click on the link (on the map) or on the **Unique ID** (on the results list). This will bring up all of the information on that artefact that has been recorded. This varies for each record, but gives you a very detailed and useful list of relevant information.

