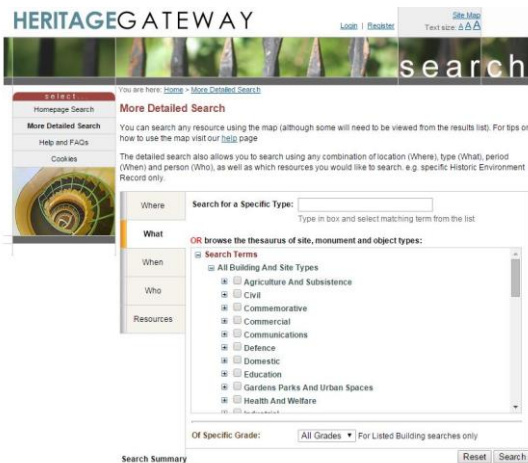
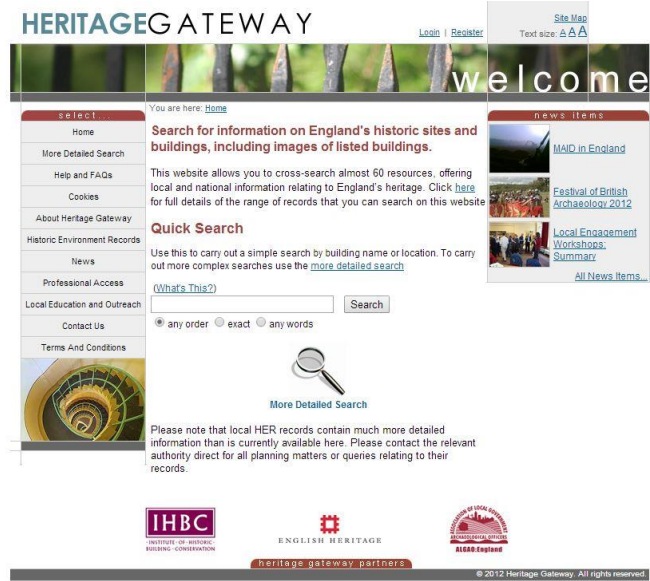


Heritage Gateway

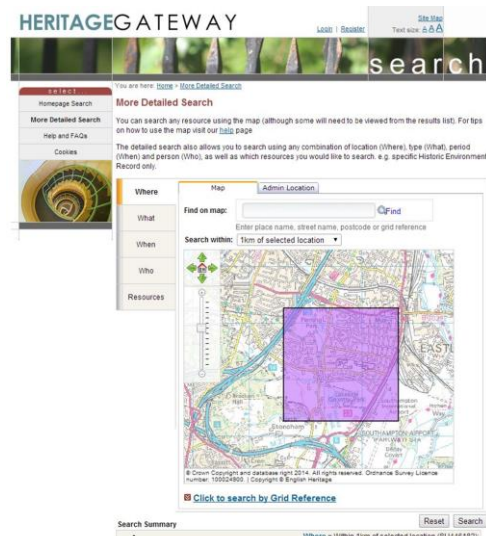
www.heritagegateway.org.uk

Heritage Gateway is one of the most complete heritage search sites available and is run and managed by English Heritage in partnership with [ALGAO](#) and [IHBC](#). The website provides access to local and national records on the historic environment including such resources as the National Record of the Historic Environment (see Research Guide No. 2: Pastscape) The National Heritage List for England, the Portable Antiquities Scheme (see Research Guide No. 9: Portable Antiquities Scheme), a number (but unfortunately not all) of county Historic Environment Records and a range of other material.



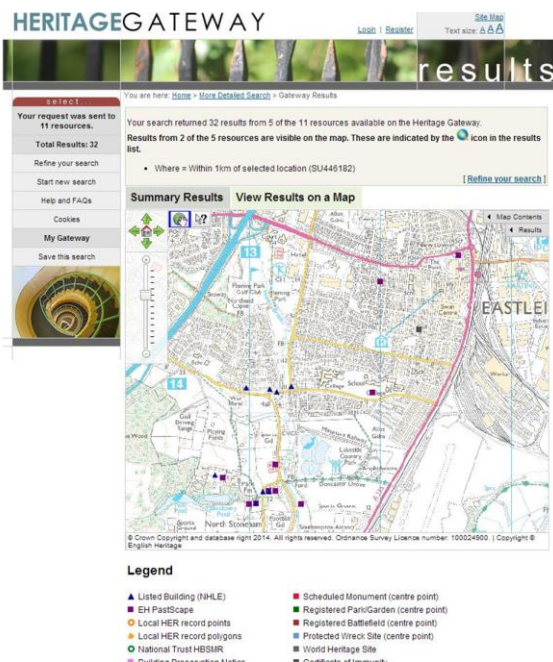
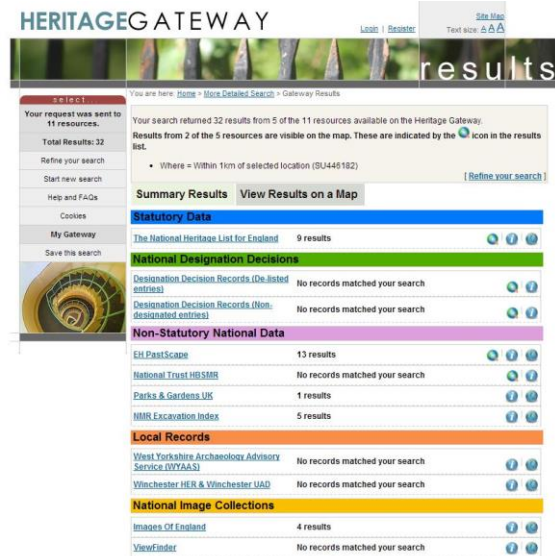
There are two main ways to search content on the site: by keyword or by area. To search by keyword, it is a simple case of typing a search term into the search bar on the main page. This will bring up a list of search results. Alternatively, you can click on the **More Detailed Search** tab on the left hand menu. In the new page, the **What** and **When** tabs can be helpful in narrowing a search down if you have sufficient information to use them.

Another efficient way to search, particularly if you wish to find available information on a specific area, is to use the **Where** tab in the **More Detailed Search** option. This provides access to map based information (Google aerial images, OS maps etc.) that allow you to choose an area of varying size (between 100m and 10km) anywhere in the country. Highlight the centre of the area you wish to search, select the 'area' for your search via the **Search within** dropdown box above the map and on the **Search** button. Alternatively you can use the link to **Search by Grid Reference** if you know it.



These searches will produce a list of results and the sources they have come from. It can often be a long list, so remember to scroll down.

You may get multiple results from one source. Clicking on that source will reveal them, or provide a link to see them all on another page or on that source's website. It's worth looking through all the results; many will be unrelated and probably quite easy to disregard. However, you may occasionally come across several related records from one source.



You can also elect to see the results on a map (click on **View Results on a Map** tab, next to **Summary Results** tab). This can be particularly useful if you've searched by area. The search results are projected onto a map, with colour and shape coding to indicate their source.

Selecting the Pointer and Question mark tool in the top left corner of the map and clicking on individual results on the map will bring up the relevant information on that site (and a link to more detail).

A very helpful benefit, especially when looking at buildings or monuments, is that geometry can be projected onto a map, showing the entire area in which a heritage feature is located, rather than just a dot or centre point.

Heritage Gateway is incredibly useful as it will search multiple heritage databases at once, giving direct access and saving you time and effort (over trying to use and understand the variety of different search engines and websites used by the individual sources). However, it is, as the name suggests, just a gateway or portal to these other sources and so the main information is usually contained on those sites anyway. Heritage Gateway therefore serves as a useful general entry point, especially if you are searching 'blind' for information. If you have a specific enquiry or know where your information may be contained, it may be easier to go directly to that source.