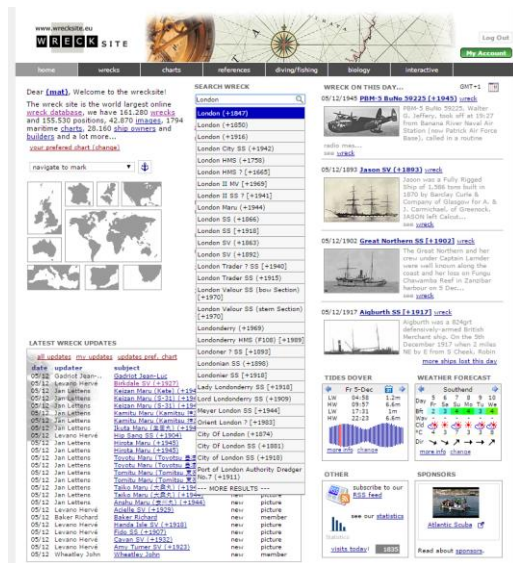
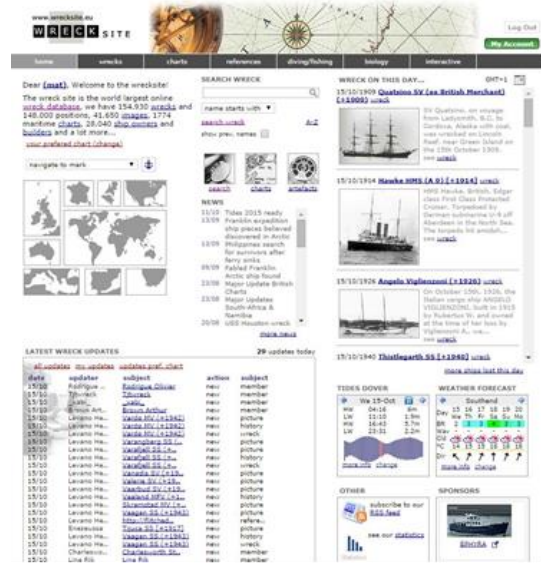


Wrecksite EU

www.wrecksite.eu

Wrecksite EU is an international database of shipwrecks. It is frequently added to by divers and researchers using information from a range of sources, including historic databases (such as Pastscape), navigational databases (such as the United Kingdom Hydrographic Office) and personal knowledge.

There are more than 160,000 wrecks listed and plotted, although this includes unidentified sites (recorded only as unidentified seabed anomalies or obstructions) and ships known to have been lost, for which the wreck has not yet been found. In the main however, a great many wrecks are quite accurately plotted globally and Wrecksite EU is a first port of call when looking for information on a shipwreck.

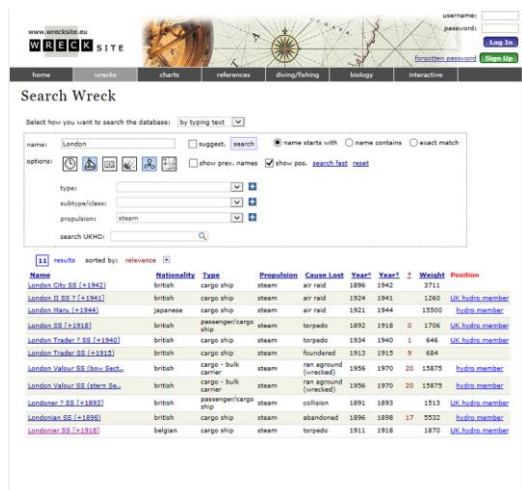


Wrecksite EU obviously has a specific focus on wrecks and it helps, if you are searching for a shipwreck, to know the name of the vessel and the year of its loss. With this information, conducting a basic search for a vessel is easy with the **Search Wreck** box on the homepage (central top). Typing a ship name in here will result in a drop down list of possible matches appearing beneath. Alongside each relevant name is the year of loss for each vessel, which makes it easier to identify the wreck you are looking for.

Immediately beneath this is an options box to help you specify the vessel you are searching for. With an extremely popular vessel name, entering the most precise information and year of loss will reduce the number of vessels in the drop down list.

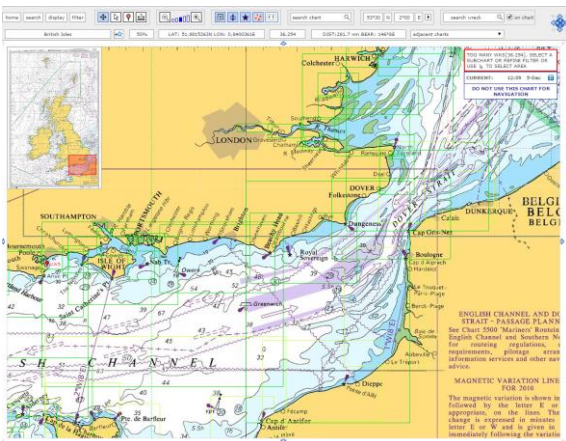
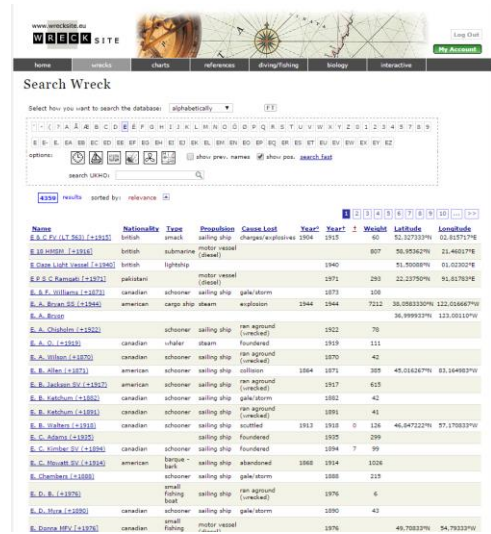
Another way to search the wrecks is using the **Search Wreck** page (listed under the Wreck tab on the menu bar). Here you can **Select how you want to search the database** with a drop down box: either alphabetically (see more about this below), warships only, by casualty figures or by typing text.

When using the typing text option, it is possible to apply filters (using the icons shown immediately below the search bar) that allow you to specify the **period, cause of loss, location, nationality, vessel type** and even **vessel propulsion**. Once again, the more common the vessel name, the more useful these search functions are.



Wrecksite EU is useable by the general public without any need to register, although more options are available if you create an account (which is free). Accounts allow you to pull up alphabetical lists of vessels; once again you can apply filters to the lists to further specify the ships you are interested in.

This is particularly useful if you have any reason to doubt the name of the vessel you have. Foreign vessel names in particular may be misspelt in English records; by pulling up alphabetical lists and filtering them accordingly, you can search for closely matching names that may be the vessel you're searching for.



Additionally, Wrecksite EU has pay-for services; you can for instance pay to have access to maritime charts of the British Isles provided by the Hydrographic Service. This enables you to view charts and move around them in the same way as Google Maps. Wrecks are marked according to their location, making this a very useful and interactive way to search for shipwrecks in a given area.

You can select a large chart of the British Isles from the main page and then choose smaller charts of specific areas. These appear as green boxes on the larger display and, if you hover over the box edges, it will identify the chart name and number of wrecks in its area. Once again you can customise your search so that only wrecks of a

specific period, type, cause of loss, propulsion and nationality are displayed. If for instance you only wanted to view wrecks along the south coast dating from the First World War, you can select the appropriate chart and level of zoom, then specify WWI in the period filter and have them displayed accordingly.

However you search, selecting the shipwreck you are interested in will pull up a record for that site. It will give you information on the history of the vessel, its location, cause of loss and possibly some prose on how it was lost. There is usually a chronological list of descriptions of the wreck based on diver observations and survey data. Not all records are similarly complete; usually the more prominent the wreck, the more likely it is to have information.

Additionally, as with all sources of information you must remember to keep an open mind about the information you are presented with. Although Wrecksite EU is well managed, inaccuracies can creep in. Images in particular tend to be representative of a ship type or builder and are not necessarily the exact ship in the record.

